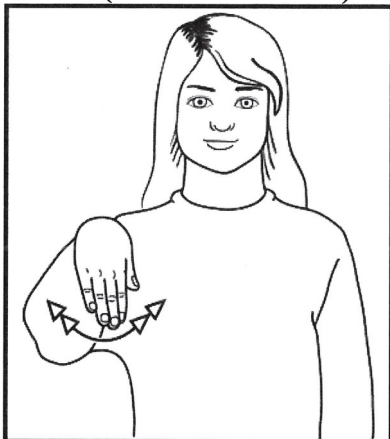




### Jingle Bells

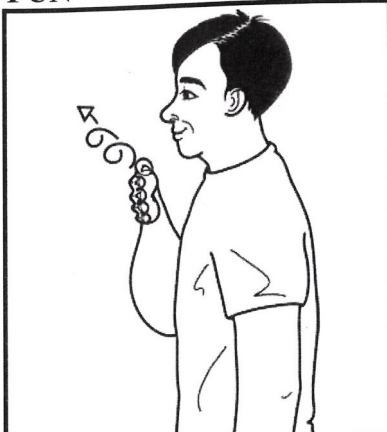
**Jingle bells, jingle bells**, jingle all the way,  
Oh what **fun** it is to **ride** in a one **horse** open **sleigh**.

#### RING (JINGLE BELLS)



Working flat hand (palm back, pointing down) at shoulder height swings several times from side to side.

#### FUN



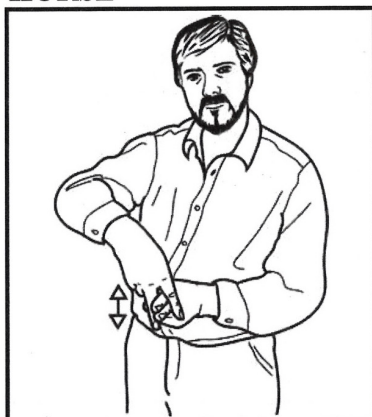
Working flat hand (palm back, pointing in) in front of neck, moves forward/up in forward circles.

#### RIDE (SIT)



Flat hands (palms down, pointing in) working hand on top, make short sharp downward movement.

#### HORSE



Working "V" hand (palm back, pointing down) astride fingers of supporting "N" hand (palm in, pointing forward); formation moves up and down.

#### OPEN SLEIGH / SLEIGHING



Two tucked hands (palms in, pointing up) bend away from body at wrists to palms in, pointing forward; then supporting flat hand (palm back, pointing in); working flat hand (palm back, pointing down) against back of supporting hand, slides down and off hand, turning to palm down, pointing forward.



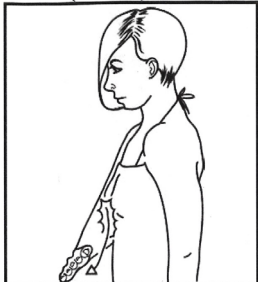
# STEPHEN HAWKING SCHOOL

WE WISH YOU A MERRY CHRISTMAS SIGNALONG AID

## We Wish You a Merry Christmas

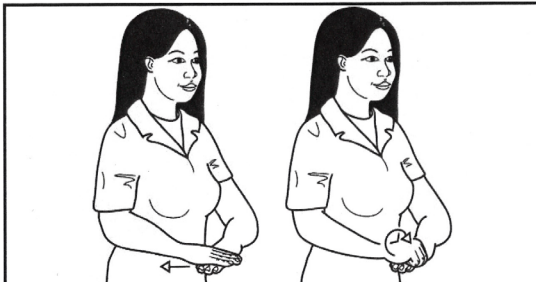
We **wish** you a **merry Christmas**,  
We **wish** you a **merry Christmas**,  
We **wish** you a **merry Christmas**,  
And a **happy** New **Year**.  
**Good** tidings we **bring**,  
To **you** and your **kin**,  
We **wish** you a **merry Christmas**,  
And a **happy** New **Year**.

WISH (WANT)



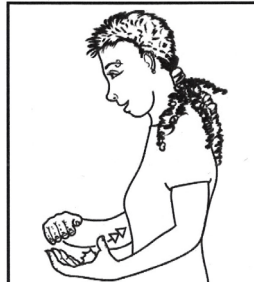
Working flat hand (palm back, pointing in) against chest, brushes down turning to palm back/down.

CHRISTMAS



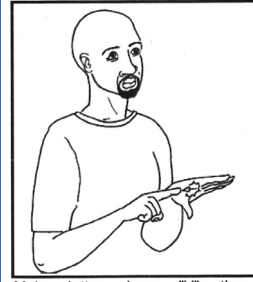
Working flat hand (palm down, pointing forward/in) above supporting flat hand (palm down, pointing forward/in); working hand pulls away changing to closed hand on back of supporting hand.

HAPPY



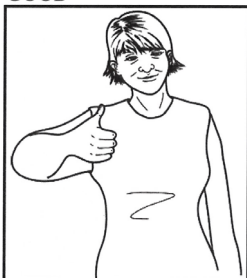
Working cupped hand strikes twice across supporting palm moving towards heel of hand.

YEAR



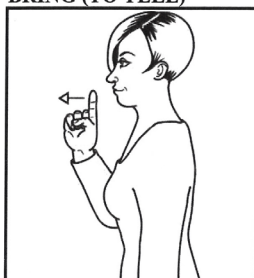
Make letter shape "Y"; then working index makes small movement down, supporting hand maintaining contact.

GOOD



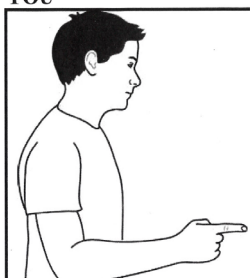
Working thumb hand (palm back, pointing in) held up in front of body.  
*Directional sign.*

BRING (TO TELL)



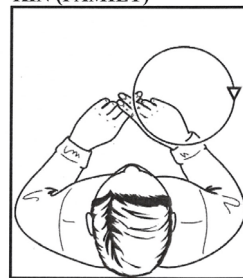
Working index hand (palm in, pointing up) moves forwards from lips.

YOU



Working index hand (palm in, pointing forward) indicates person.  
*Directional sign.*

KIN (FAMILY)



Working "N" hand rests on supporting "N" hand (palms down, pointing forward/in); formation circles out to working side.